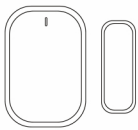


Instruction Manual

Smart Door/Window Sensor

Zigbee 3.0



English



MMC3211

- Bitte scannen Sie den QR-Code, um das deutsche Handbuch, das Installationsvideo und die Funktionseinführung zu erhalten
- Escanee el código QR para obtener el manual en español, el video de instalación y la introducción de la función
- Veillez scanner le code QR pour obtenir le manuel en français, la vidéo d'installation et l'introduction des fonctions
- Отсканируйте QR-код, чтобы получить руководство на русском языке, видео по установке и описание функций
- Scansionare il codice QR per ottenere il manuale in italiano, il video di installazione e la guida alle funzionalità. Video di installazione e funzionalità
- Leia o código QR para obter o manual em português, o vídeo de instalação e a introdução das funções
- Zeskanuj kod QR, aby uzyskać instrukcje, filmy instalacyjne i funkcje

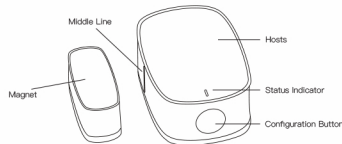
من فضلك قم بفتح رمز الاستجابة السريعة (QR-code) للحصول على دليل المستخدم باللغة العربية وقديو التثبيت ووصف الوظيفة



請掃描二維碼獲取中文的說明書、安裝視頻及功能介紹

Product Introduction

Smart Door/Window Sensor senses the opening and closing status of doors and windows by detecting the proximity and separation of magnets. Alarm information can be uploaded through Zigbee protocol in wireless IOT mode. Records can be uploaded to realise the security detection of the monitored objects. This product is suitable for home residence, building villa, factory, shopping mall, office building and so on.



*Make sure the side of the magnet with marked line is aligned to the side of the hosts marked with the Middle line.

Packing List

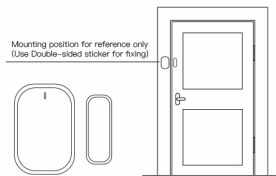
- Door/Window Sensor *1
- Battery *1
- Product user manual *1
- Double-sided sticker *2

Technical Parameters

Model	ZSS-S01-GWM-C
Product Name	Smart Door/Window Sensor
Wireless Connection	Zigbee
Support Low Battery Alarm	Yes
Operating Temperature	-10°C ~ +50°C
Alarm Trigger Distance	20±5mm
Battery Specifications	CR2032 (replaceable)
Product Size	Host 40*26*13 mm
	Magnet 26*9.5*11mm

Installation Instructions

The product can be applied to the door, window and other scenes, please install the host and the magnet separately on the fixed door frame or window, as shown in the following figure.



- Do not install outdoors, on a weak foundation, or in a location subject to rain.
- Do not place magnetic metals or other objects to avoid interfering with the sensor's work.

Preparation for Use

1. Download Smart Life APP



Please scan the QR code or download Smart Life on App store

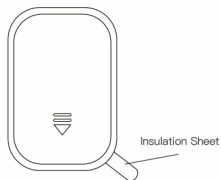
2. Register or Log in



- Download "Smart Life" Application
- Enter the Register/Login interface; tap "Register" to create an account by entering your phone number to get verification code and "Set password". Choose "Log in" if you already have a Smart Life account.

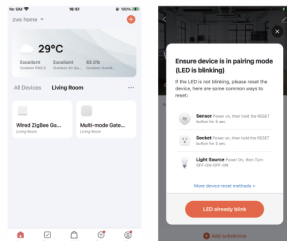
Add device

- Slide the rear cover towards the direction of the arrow, remove the rear cover, then remove the insulation sheet and finally reinstall the rear cover.

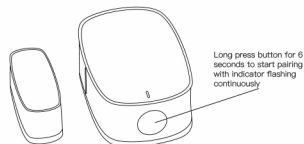


Remove insulation sheet to power on the sensor.

- Open the Smart Life/Tuya Smart APP, make sure the ZigBee gateway/multimode gateway is connected to the APP, enter the gateway and click "Add New Device".

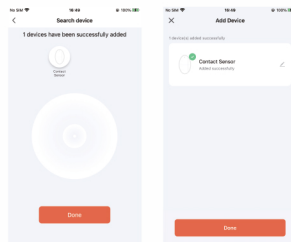


- Enter configuration mode
 - Press and hold the "button" for more than 6 seconds until the white indicator light flashes quickly, and the sensor enters pairing mode. (Note: When configuring the network, please make the device as close as possible to the gateway.)
 - If the network configuration fails, press and hold the device button again until the white light flashes quickly, and repeat the above operations.

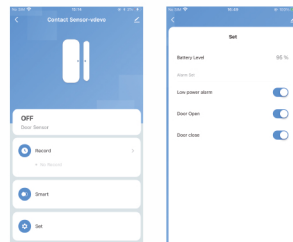


Long press button for 6 seconds to start pairing with indicator flashing continuously

- Wait for 10-120 seconds. After adding the device successfully, you can edit the device name.



- Now you can set "smart scene linkage" according to your needs and enjoy your smart home life.



Restriction of elements or element identification tables

Part Name	Toxic and hazardous substances or elements					
	Lead (Pb)	Mercury (Hg)	Chromium (Cd)	Hexavalent motto (Cr(VI))	Di-o-phenyl (PBB)	Dioxydiphenyl/ether phenyl ether (PBDE)
LED	○	○	○	○	○	○
Circuit Board	X	○	○	○	○	○
Housings and other components	X	○	○	○	○	○

This form has been prepared in accordance with the provisions of SJ/T 11364.

○:Indicates that the content of the toxic and hazardous substances in all homogeneous materials of the component is below the limits specified in the GB/T26572 standard limit requirements below.

X: It means that the content of the toxic and hazardous substance in at least one of the homogeneous materials of the part exceeds the limit requirements stipulated in the GB/T26572 standard. Since there is no alternative at the moment, it complies with the EU RoHS standards.