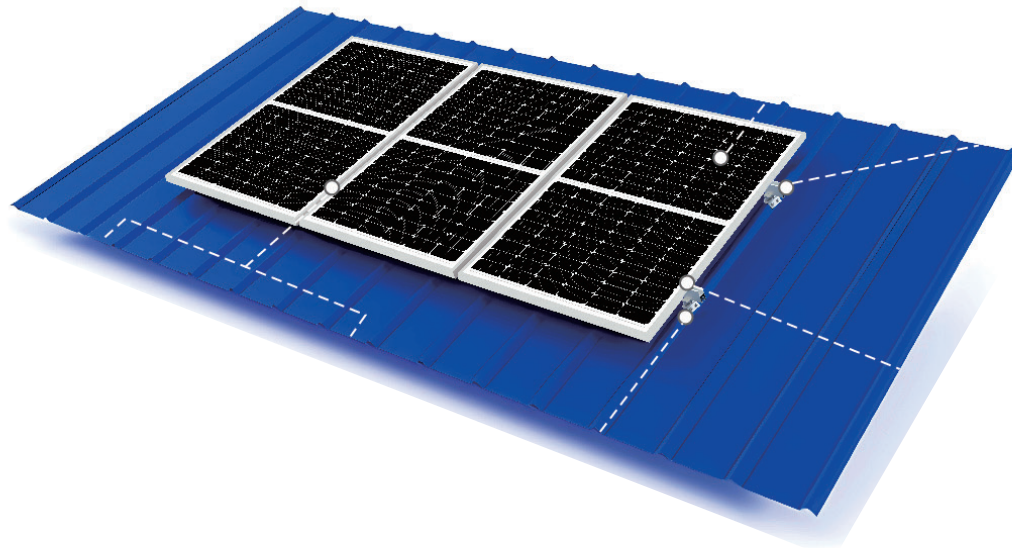




Meaningful Innovation.

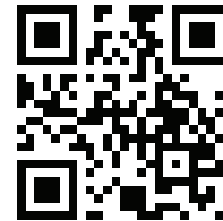
INSTRUCTION MANUAL L FEET GROUP



SKU 11583

INTRODUCTION

Thank you for selecting and buying V-TAC Product. V-TAC will serve you the best. Please read these instructions carefully & keep this user manual handy for future reference. If you have any another query, please contact our dealer or local vendor from whom you have purchased the product. They are trained and ready to serve you at the best.



MULTI-LANGUAGE MANUAL QR CODE

Please scan the QR code to access the manual in multiple languages.

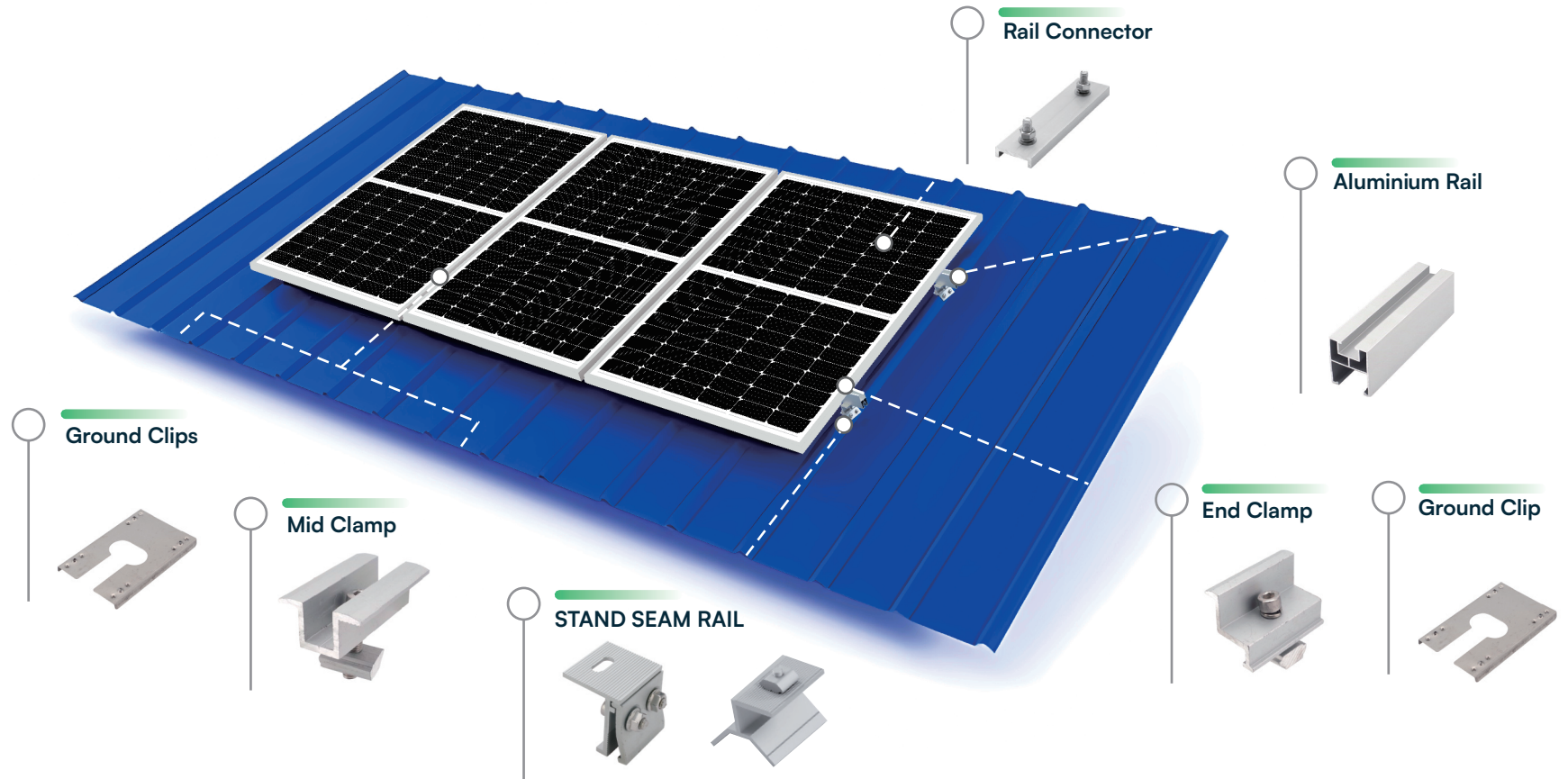
| SKU | DESCRIPTION |
|-------|---|
| 11390 | SILVER RAIL 1200MM FOR SOLAR PANEL 4PCS/SET |
| 11389 | MIDDLE CLAMP 35MM FOR SOLAR PANEL 8PCS/SET |
| 11391 | ROOFTOP HOOK FOR SOLAR PANEL 5PCS/SET |
| 11392 | TT NUT FOR SOLAR PANEL 20PCS/SET |
| 11393 | SCREW M6*50MM FOR SOLAR PANEL 30PCS/SET |
| 11394 | SPLICE FOR SILVER RAIL 8PCS/SET |
| 11395 | GROUNDING PLATE FOR SOLAR PANEL 8PCS/SET |
| 11388 | END CLAMP 35MM FOR SOLAR PANEL 4PCS/SET |

| | |
|-------|--|
| 11385 | ADJUSTABLE REAR LEG (H280-415mm/10°-15°) FOR SOLAR PANEL |
| 11386 | ADJUSTABLE REAR LEG (H420-700mm/15°-30°) FOR SOLAR PANEL |
| 11387 | TRIANGLE SUPPORT WITH ADJUSTABLE ANGLE 10°-15° FOR SOLAR PANEL |
| 11417 | ADJUSTABLE FRONT LEG FOR SOLAR PANEL |
| 11538 | SILVER RAIL 2000MM FOR SOLAR PANEL 4PCS/SET |

IN CASE OF ANY QUERY/ISSUE WITH THE PRODUCT, PLEASE REACH OUT TO US AT: SUPPORT@V-TAC.EU
FOR MORE PRODUCTS RANGE, INQUIRY PLEASE CONTACT OUR DISTRIBUTOR OR NEAREST DEALERS.
V-TAC EUROPE LTD. BULGARIA, PLOVDIV 4000, BUL.L.KARAVELOW 9B

CORRUGATED SHEET METAL BRACKETS

Customization of Solar Mounting System

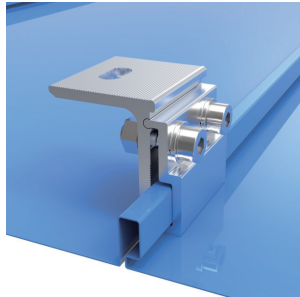


* The final solution will be defined according to the project condition.

V-TAC CORRUGATED SHEET METAL BRACKETS INSTALLATION MANUAL

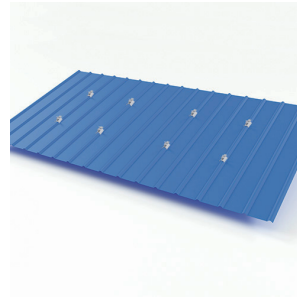
Step 1

Select the suitable clamps to stand on the metal tile.



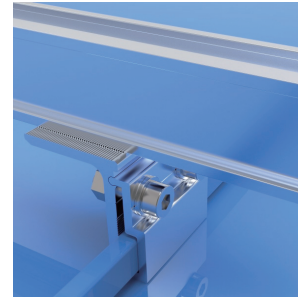
Step 2

Fix the rest clamps as the same way.



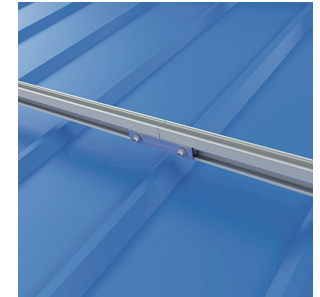
Step 3

Install the suitable rails on the clamps with screws.



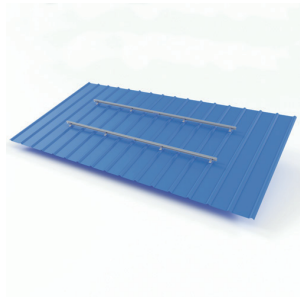
Step 4

Connect the rails with splice.



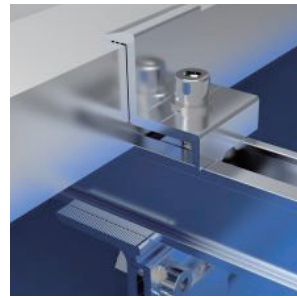
Step 5

Finish the installation of rails as same way.



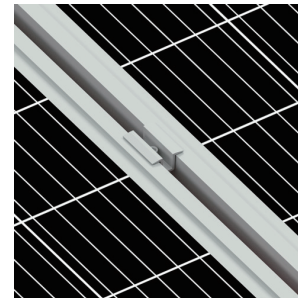
Step 6

Fix solar panels on the rails with end clamps.



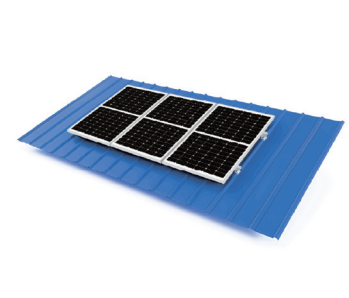
Step 7

Fix two solar panels on the rails with mid clamps.



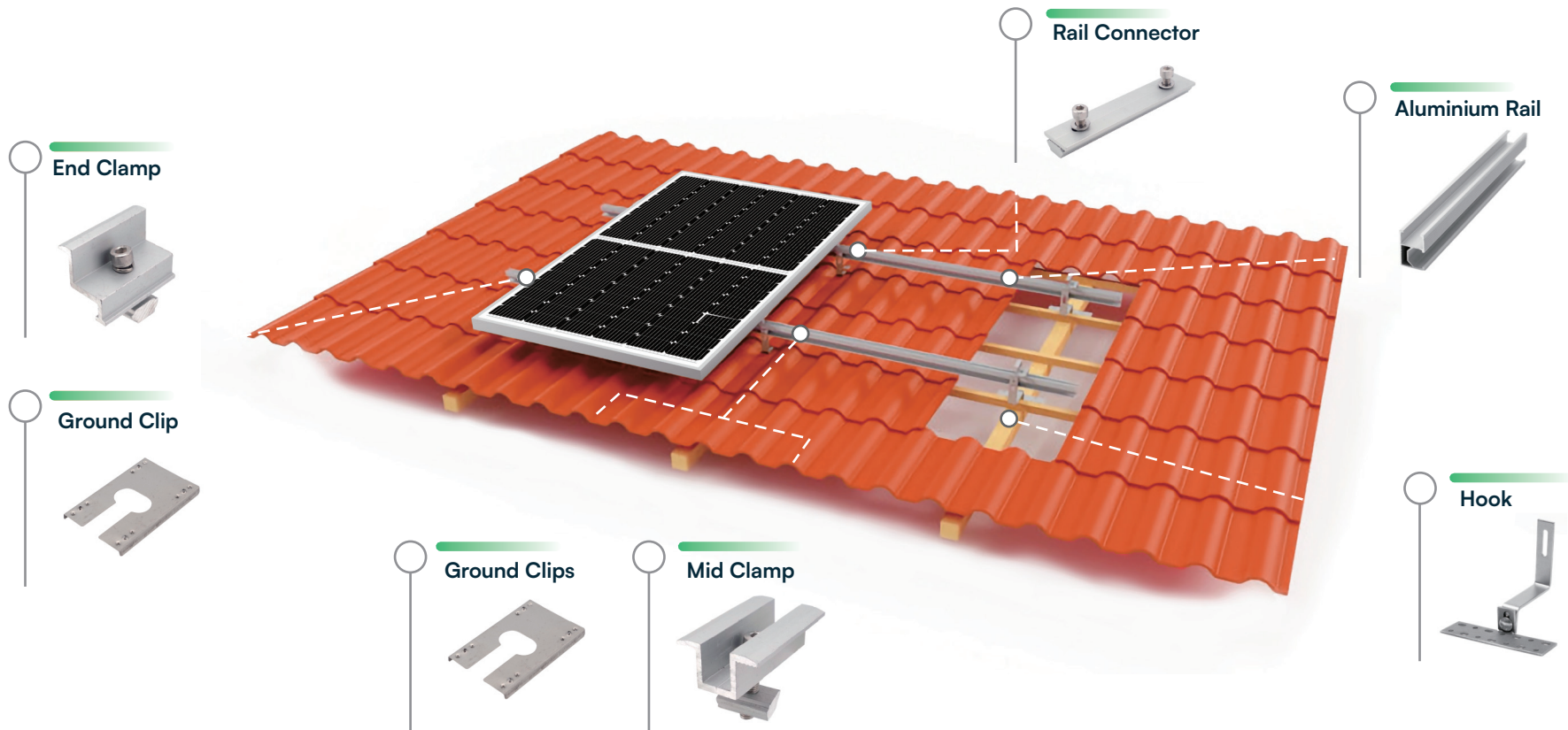
Step 8

Finish the installation.



PITCHED TILE ROOF BRACKETS

Customization of Solar Mounting System



* The final solution will be defined according to the project condition.

V-TAC PITCHED TILE ROOF BRACKETS INSTALLATION MANUAL

Step 1

Move away the glazed tile.



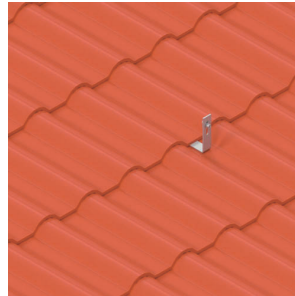
Step 2

Fix the SUS304 hooks on the rafter with screws.



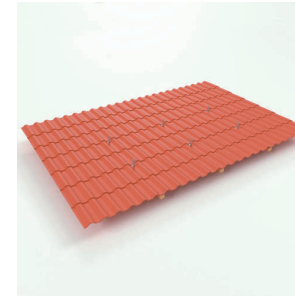
Step 3

After fixing the hooks, move back the glazed tile.



Step 4

Install the rest hooks as the same way.



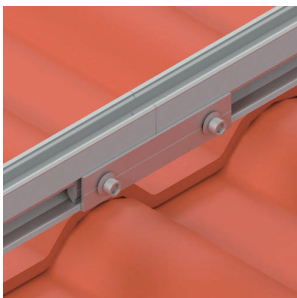
Step 5

Install the rails on the hooks with slider nuts.



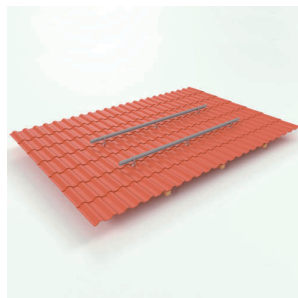
Step 6

Finish the installation of rails as same way.



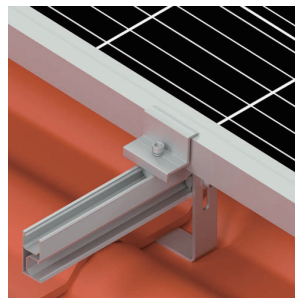
Step 7

Finish the installation of rails as same way.



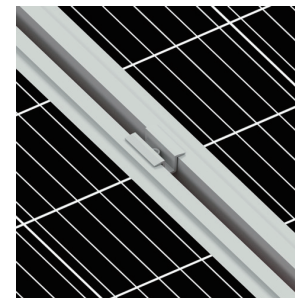
Step 8

Fix solar panels on the rails with end clamps.



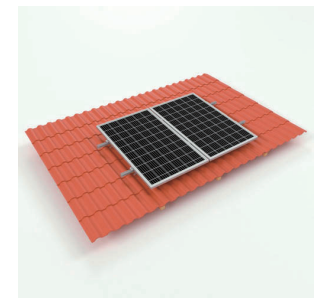
Step 9

Fix two solar panels on the rails with mid clamps.



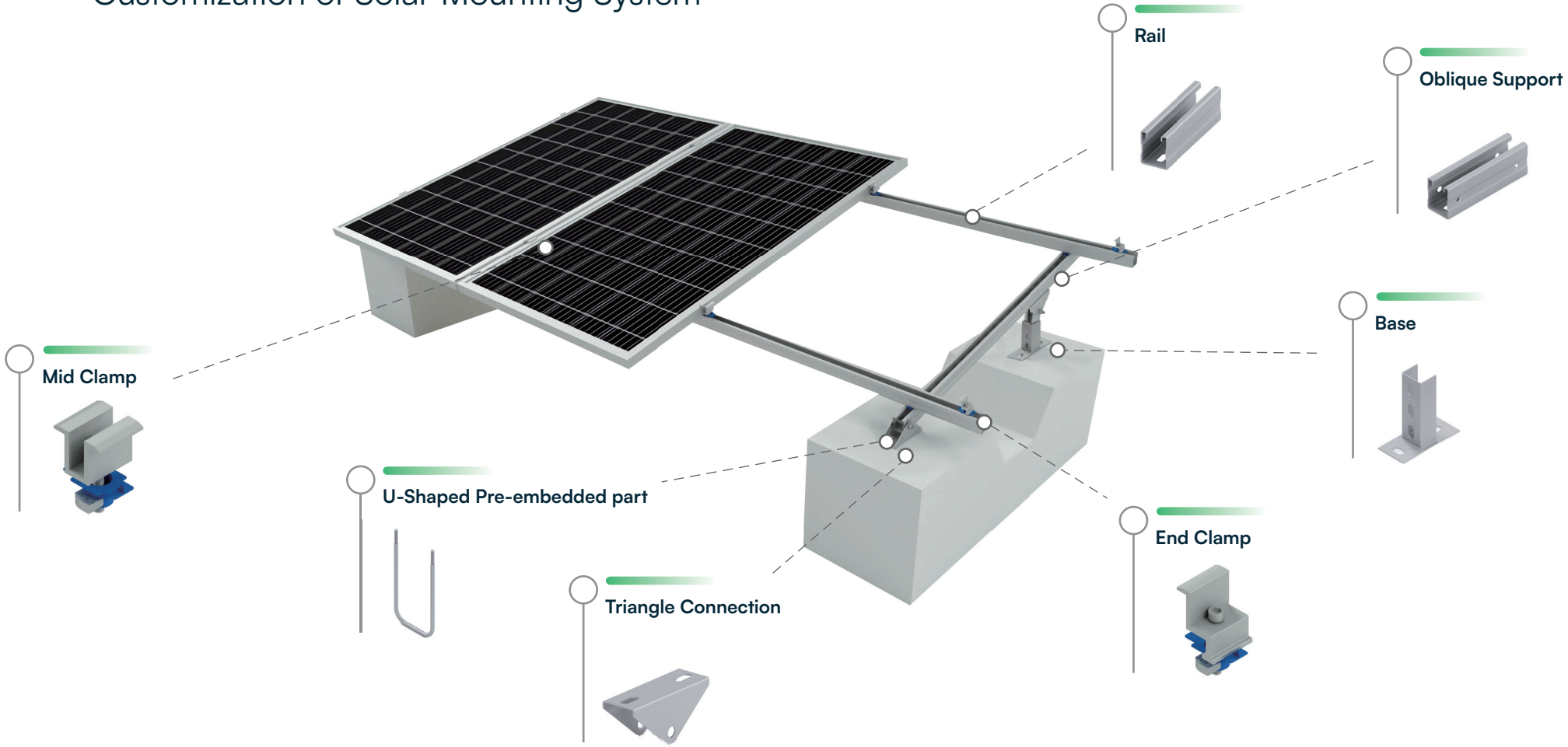
Step 10

Finish the installation.



CONCRETE FLAT ROOF BRACKETS

Customization of Solar Mounting System

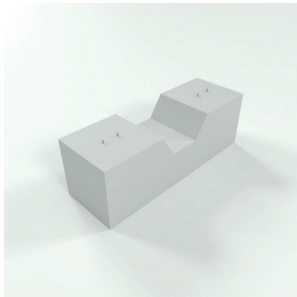


* The final solution will be defined according to the project condition.

V-TAC CONCRET FLAT ROOF BRACKETS INSTALLATION MANUAL

Step 1

Pre-embed the U-shaped parts in the concrete block.



Step 2

Install the base and triangle.



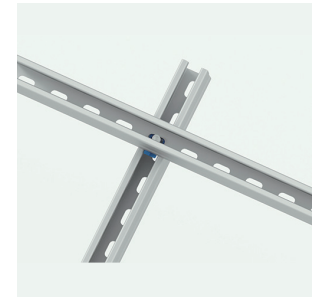
Step 3

Install the column and oblique support on the base.



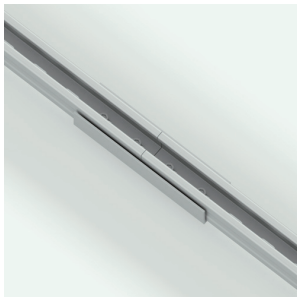
Step 4

Fix rails on triangle with screws.



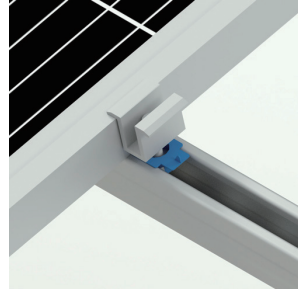
Step 5

Connect the rails with connection.



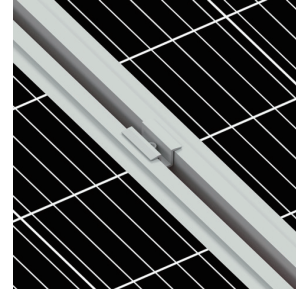
Step 6

Fix solar panels on the rails with end clamps.



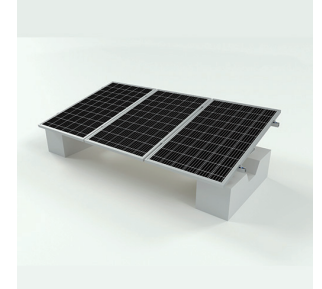
Step 7

Fix two solar panels with mid clamps.



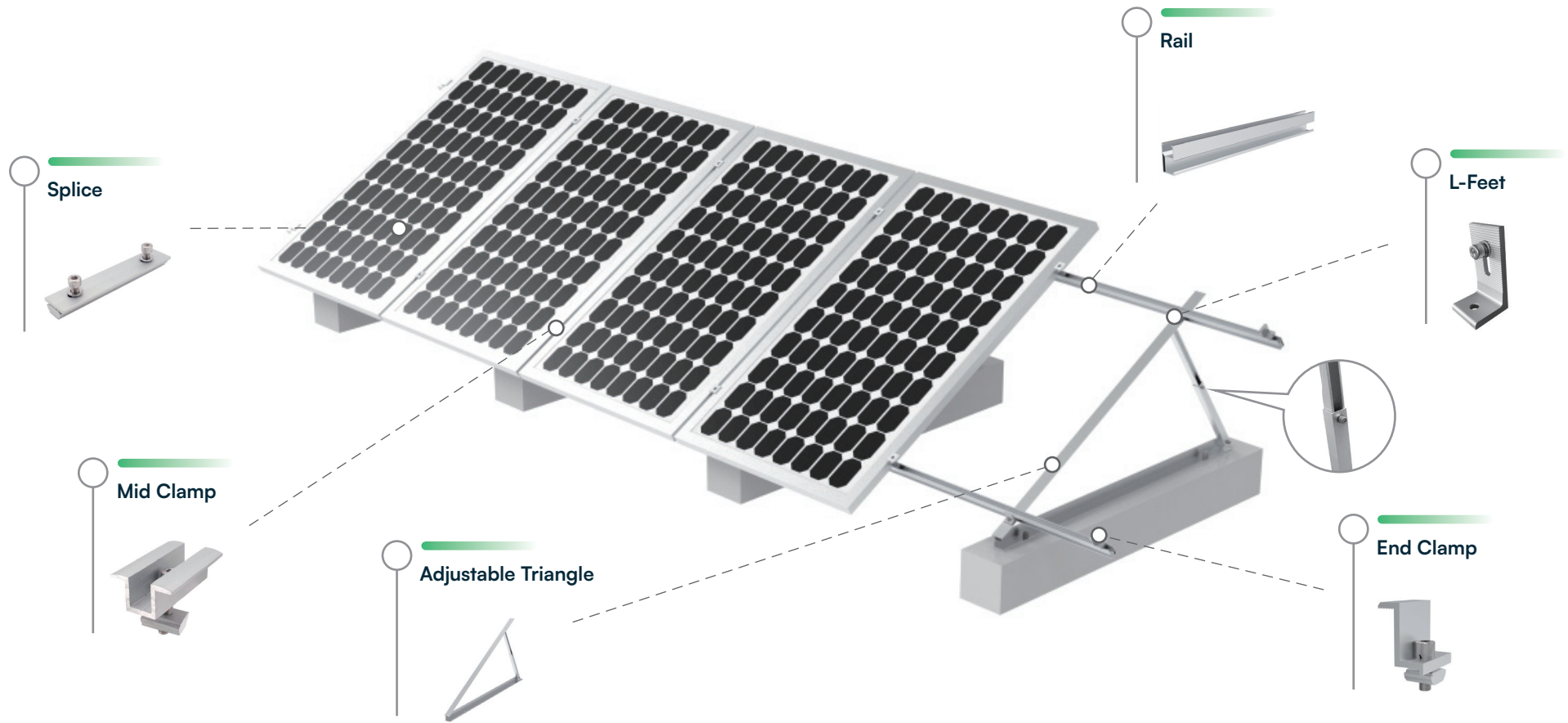
Step 8

Finish the installation.



FLAT ROOF ADJUSTABLE TRIANGLE BRACKETS

Customization of Solar Mounting System



* The final solution will be defined according to the project condition.

V-TAC FLAT ROOF ADJUSTABLE TRIANGLE BRACKETS INSTALLATION MANUAL



Step 1

Unfold the pre-assembled adjustable triangle, adjust the length of the side column according to the required optimal tilt angle, then lock the bolt tightly;



Step 2

Install the rails on the adjustable triangle with the L-Feet, lock the bolt tightly and make sure all rails are in same level.



Step 3

Connect the rails with splice.



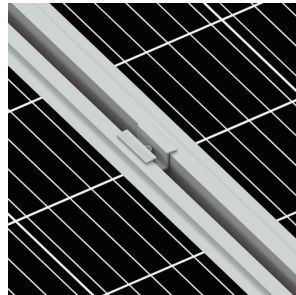
Step 4

Fix solar panels on the rails with end clamps



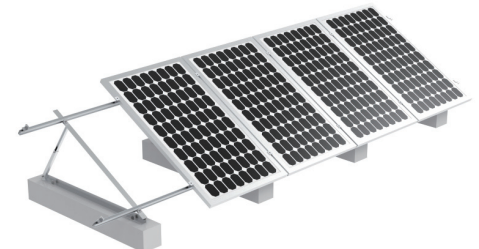
Step 5

Fix two solar panels with mid clamps.



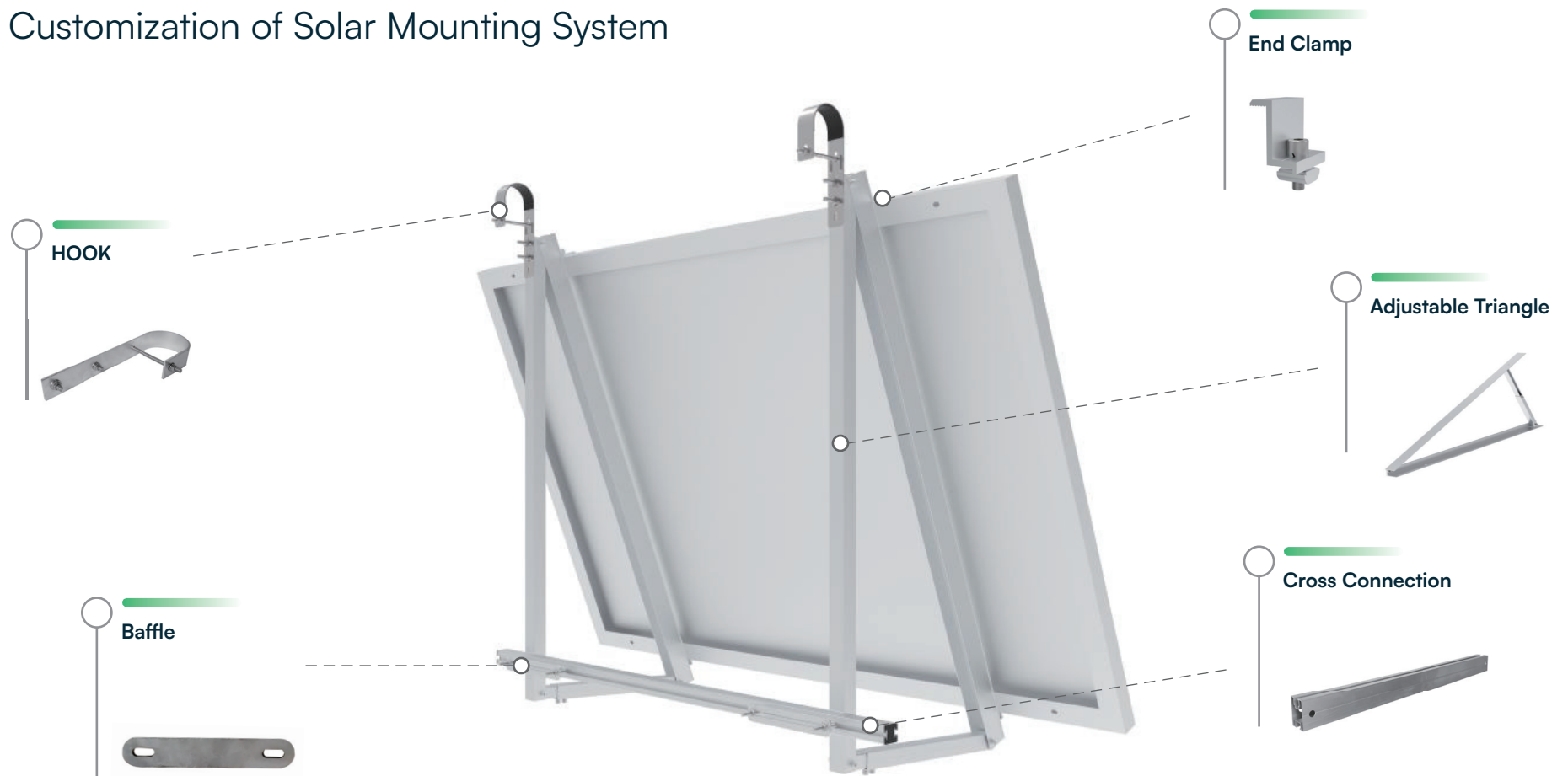
Step 6

Finish the installation.



ADJUSTABLE BALCONY BRACKETS

Customization of Solar Mounting System



* The final solution will be defined according to the project condition.

V-TAC ADJUSTABLE BALCONY BRACKETS INSTALLATION MANUAL



Step 1

Unfold the pre-assembled adjustable triangle, adjust the length of the side column according to the required optimal tilt angle, then lock the bolt tightly;



Step 2

Fix the Hooks with screws.



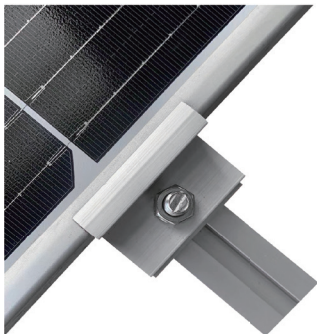
Step 3

Connect two triangles with cross connection



Step 4

Fix solar panels on the triangles with end clamps



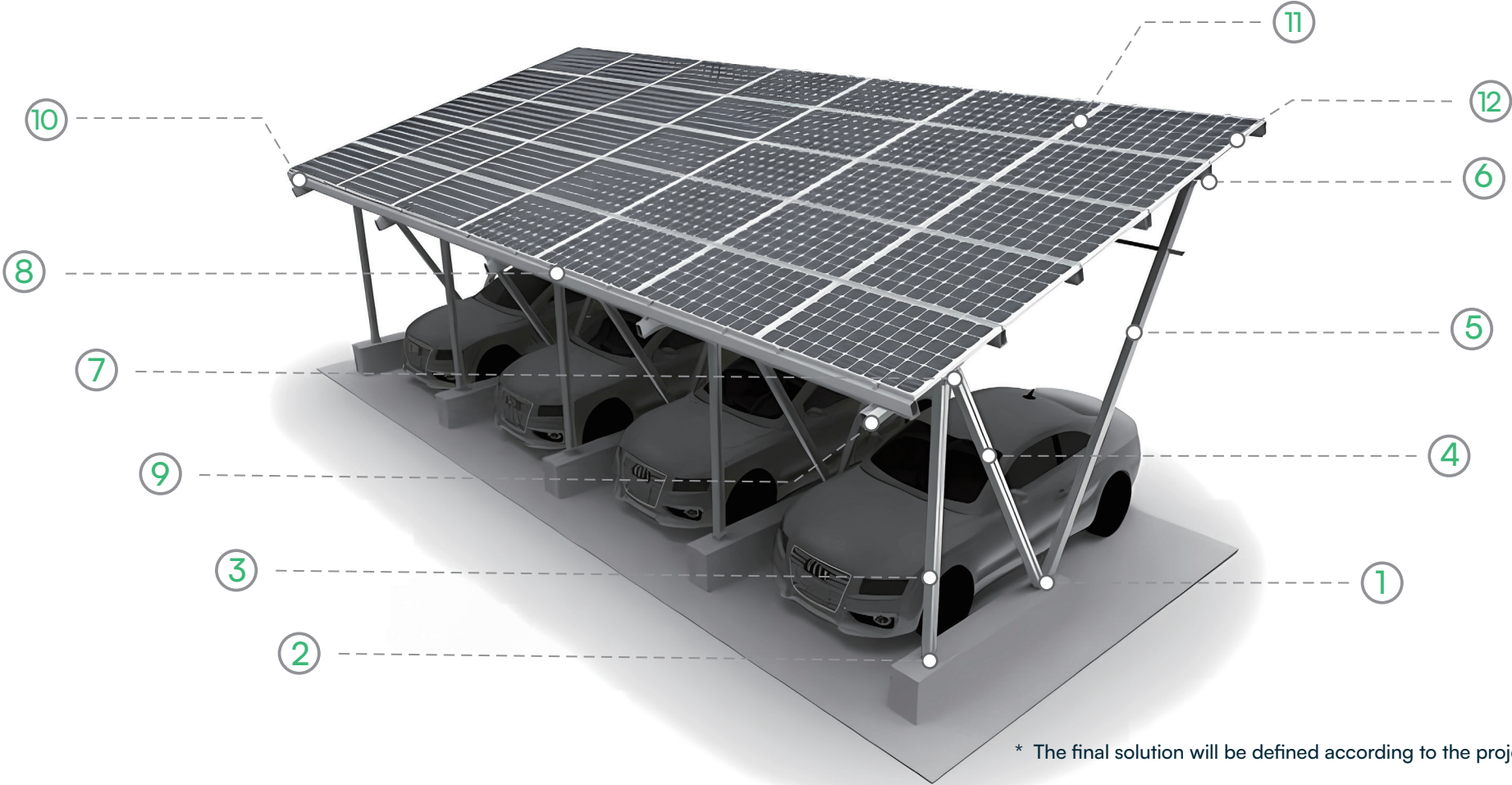
Step 5

Finish the Installation.



SOLAR CARPORT BRACKETS

Customization of Solar Mounting System

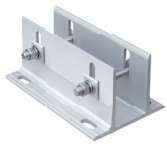


* The final solution will be defined according to the project condition.

V-TAC ACCESSORIES OF SOLAR CARPORT BRACKETS

1

Base (300mm)



2

Base (200mm)



3

Carport Tube (2500mm)



4

Carport Tube (3760mm)



5

Carport Tube (2950mm)



6

H Jacket (150mm)



7

H Jacket (220mm)



8

Crossbar Rail



9

Carport Stringer



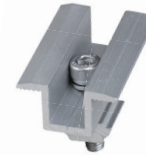
10

Clamping kit (35mm)



11

Mid Clamp (35mm)



12

End Clamp (35mm)

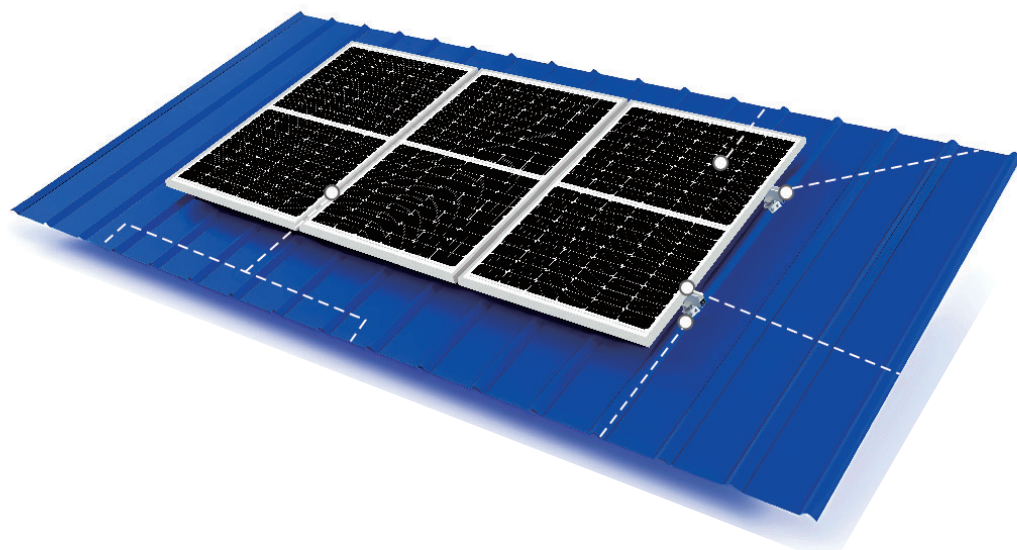




Meaningful Innovation.

MANUEL D'INSTRUCTIONS

GROUPE L FEET



SKU 11583

INTRODUCTION

Merci d'avoir choisi et acheté un produit V-TAC. V-TAC vous servira au mieux. Veuillez lire attentivement ces instructions et conserver ce manuel d'utilisation à portée de main pour toute référence ultérieure. Si vous avez d'autres questions, veuillez contacter notre revendeur ou le vendeur local auprès duquel vous avez acheté le produit. Ils sont formés et prêts à vous servir au mieux.



MULTI-LANGUES MANUEL QR CODE

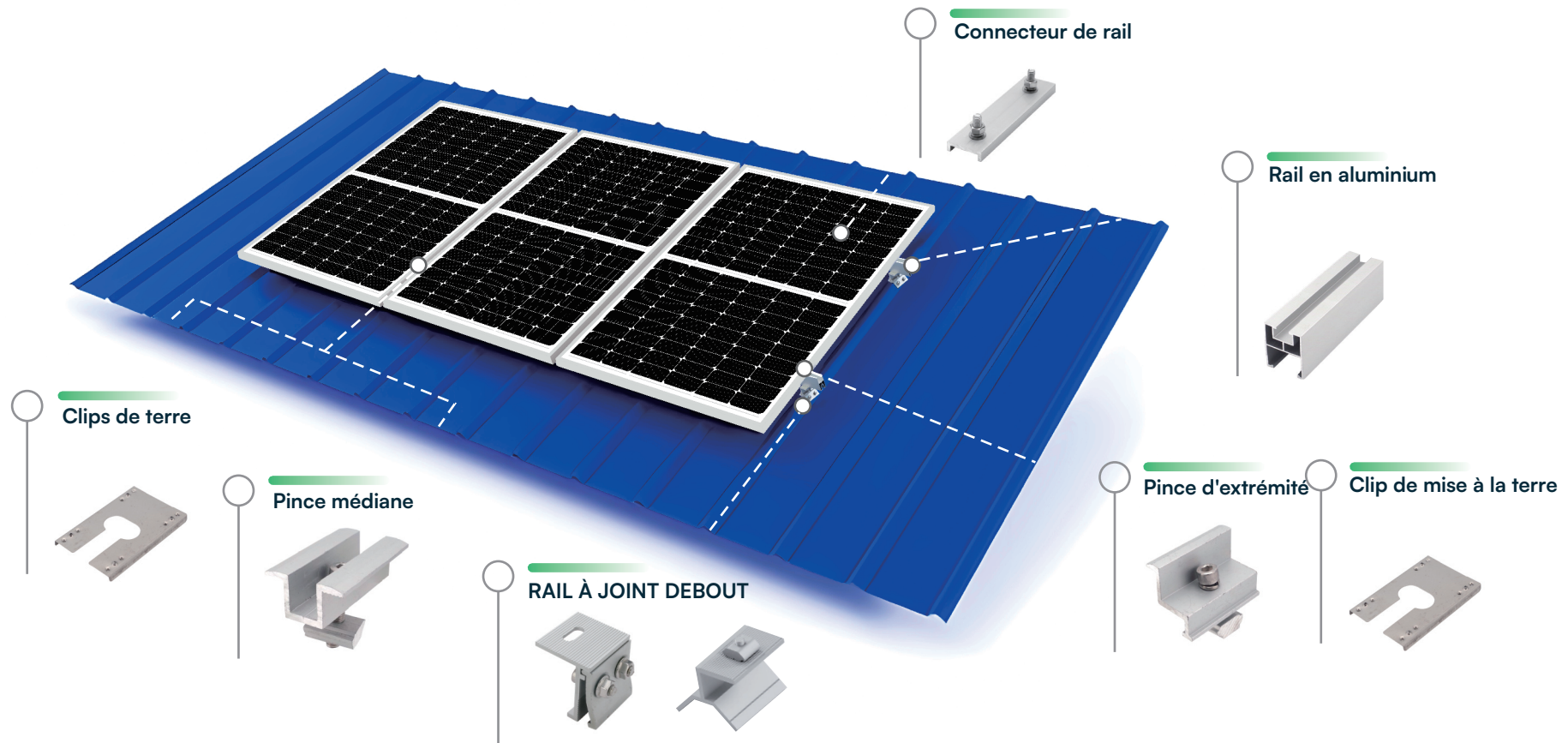
Veuillez scanner le code QR pour accéder au manuel en plusieurs langues.

| SKU | DESCRIPTION |
|-------|---|
| 11390 | SILVER RAIL 1200MM FOR SOLAR PANEL 4PCS/SET |
| 11389 | MIDDLE CLAMP 35MM FOR SOLAR PANEL 8PCS/SET |
| 11391 | ROOFTOP HOOK FOR SOLAR PANEL 5PCS/SET |
| 11392 | TT NUT FOR SOLAR PANEL 20PCS/SET |
| 11393 | SCREW M6*50MM FOR SOLAR PANEL 30PCS/SET |
| 11394 | SPLICE FOR SILVER RAIL 8PCS/SET |
| 11395 | GROUNDING PLATE FOR SOLAR PANEL 8PCS/SET |
| 11388 | END CLAMP 35MM FOR SOLAR PANEL 4PCS/SET |

| | |
|-------|--|
| 11385 | ADJUSTABLE REAR LEG (H280-415mm/10°-15°) FOR SOLAR PANEL |
| 11386 | ADJUSTABLE REAR LEG (H420-700mm/15°-30°) FOR SOLAR PANEL |
| 11387 | TRIANGLE SUPPORT WITH ADJUSTABLE ANGLE 10°-15° FOR SOLAR PANEL |
| 11417 | ADJUSTABLE FRONT LEG FOR SOLAR PANEL |
| 11538 | SILVER RAIL 2000MM FOR SOLAR PANEL 4PCS/SET |

SUPPORTS EN TÔLE ONDULÉE

Personnalisation du système de montage solaire

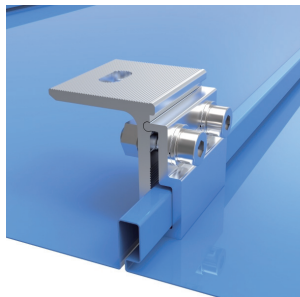


* La solution finale sera définie en fonction des conditions du projet.

SUPPORTS POUR TÔLE ONDULÉE V-TAC MANUEL D'INSTALLATION

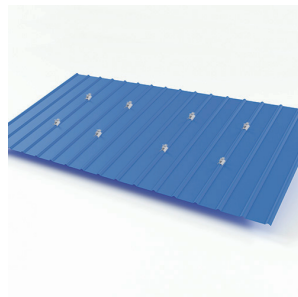
Étape 1

Sélectionnez les pinces appropriées pour sur la tuile métallique.



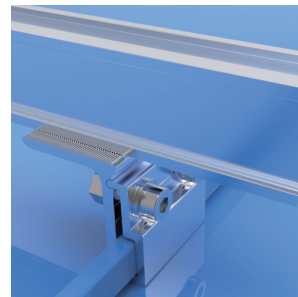
Étape 2

Fixer les autres pinces de la même manière.



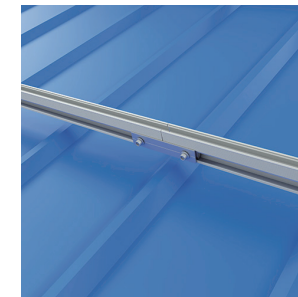
Étape 3

Installer les rails appropriés sur les à l'aide de vis.



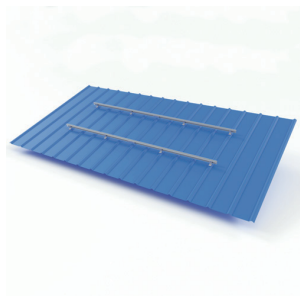
Étape 4

Relier les rails à l'aide d'une épissure.



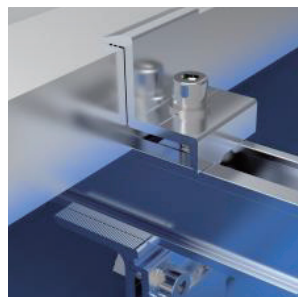
Étape 5

Terminer l'installation des rails de la même manière.



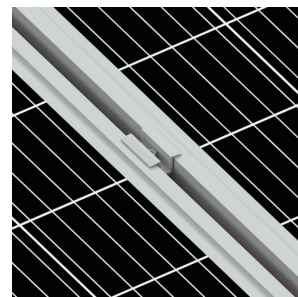
Étape 6

Fixer les panneaux solaires sur les rails à l'aide de pinces d'extrémité.



Étape 7

Fixer deux panneaux solaires sur les rails à l'aide de pinces intermédiaires.



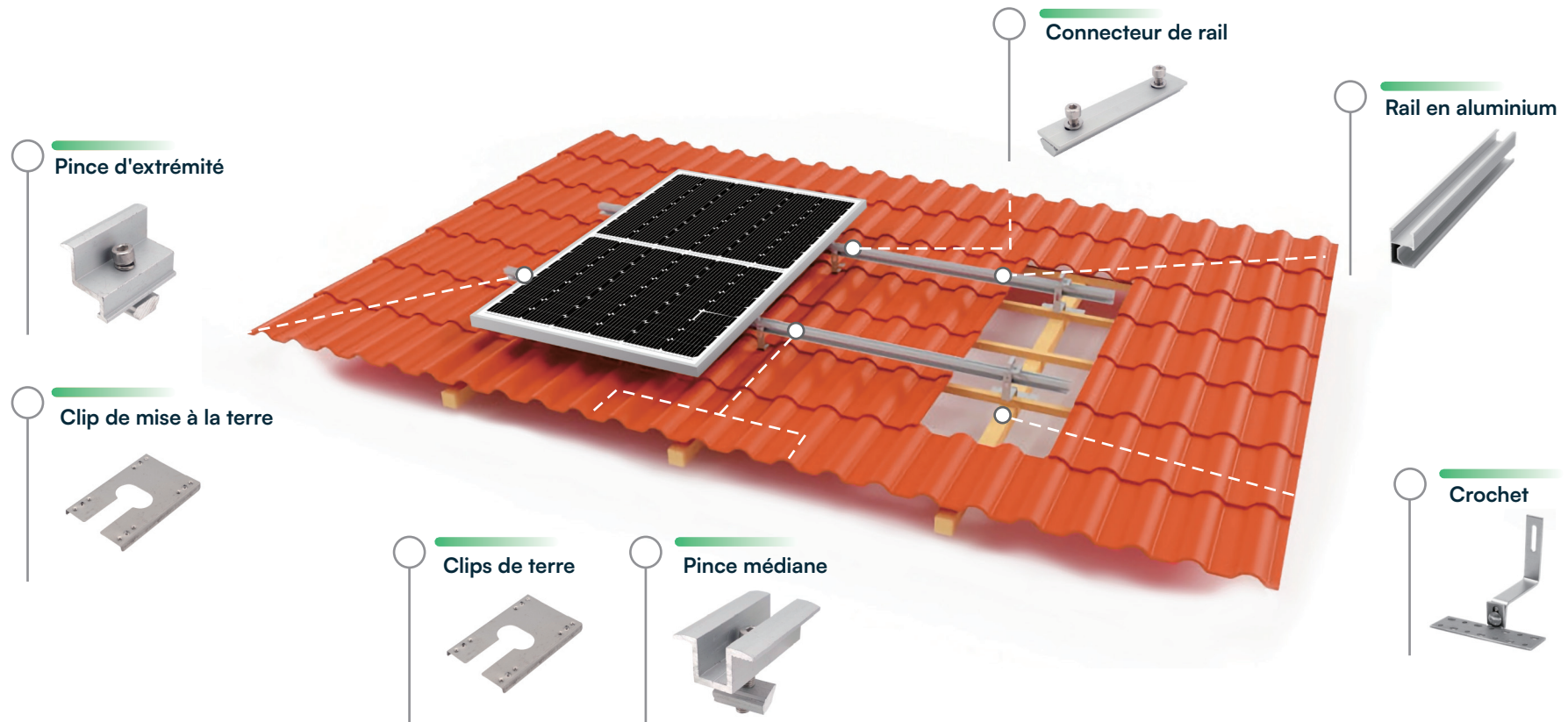
Étape 8

Terminez l'installation.



SUPPORTS DE TOIT EN TUILES INCLINÉES

Personnalisation du système de montage solaire



* La solution finale sera définie en fonction des conditions du projet.

SUPPORTS DE TOIT POUR TUILES INCLINÉES V-TAC

MANUEL D'INSTALLATION

Étape 1

Déplacer le carreau émaillé.



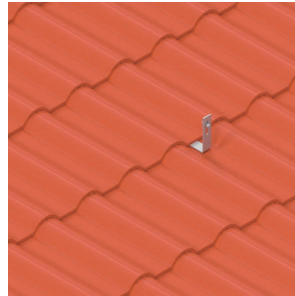
Étape 2

Fixer les crochets SUS304 sur le chevron à l'aide de vis.
chevron à l'aide de vis.



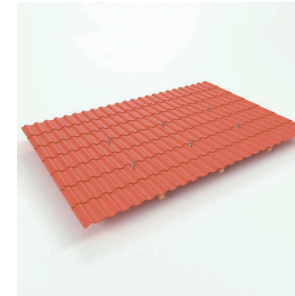
Étape 3

Après avoir fixé les crochets, déplacez le carreau émaillé.



Étape 4

Installer les autres crochets de la même manière.



Étape 5

Installer les rails sur les crochets avec les écrous coulissants.



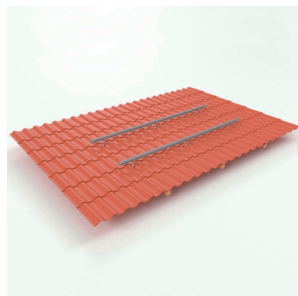
Étape 6

Terminer l'installation des rails de la même manière.



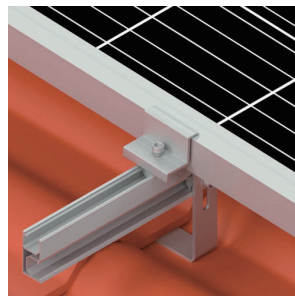
Étape 7

Terminer l'installation des rails de la même manière.



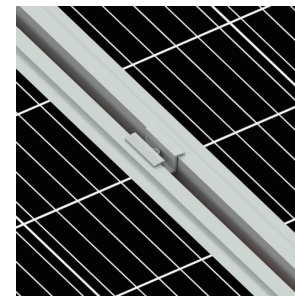
Étape 8

Fixer les panneaux solaires sur les rails à l'aide de pinces d'extrémité.



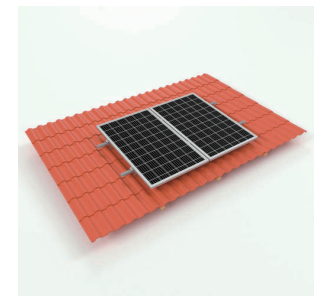
Étape 9

Fixer deux panneaux solaires sur les rails à l'aide de pinces intermédiaires.



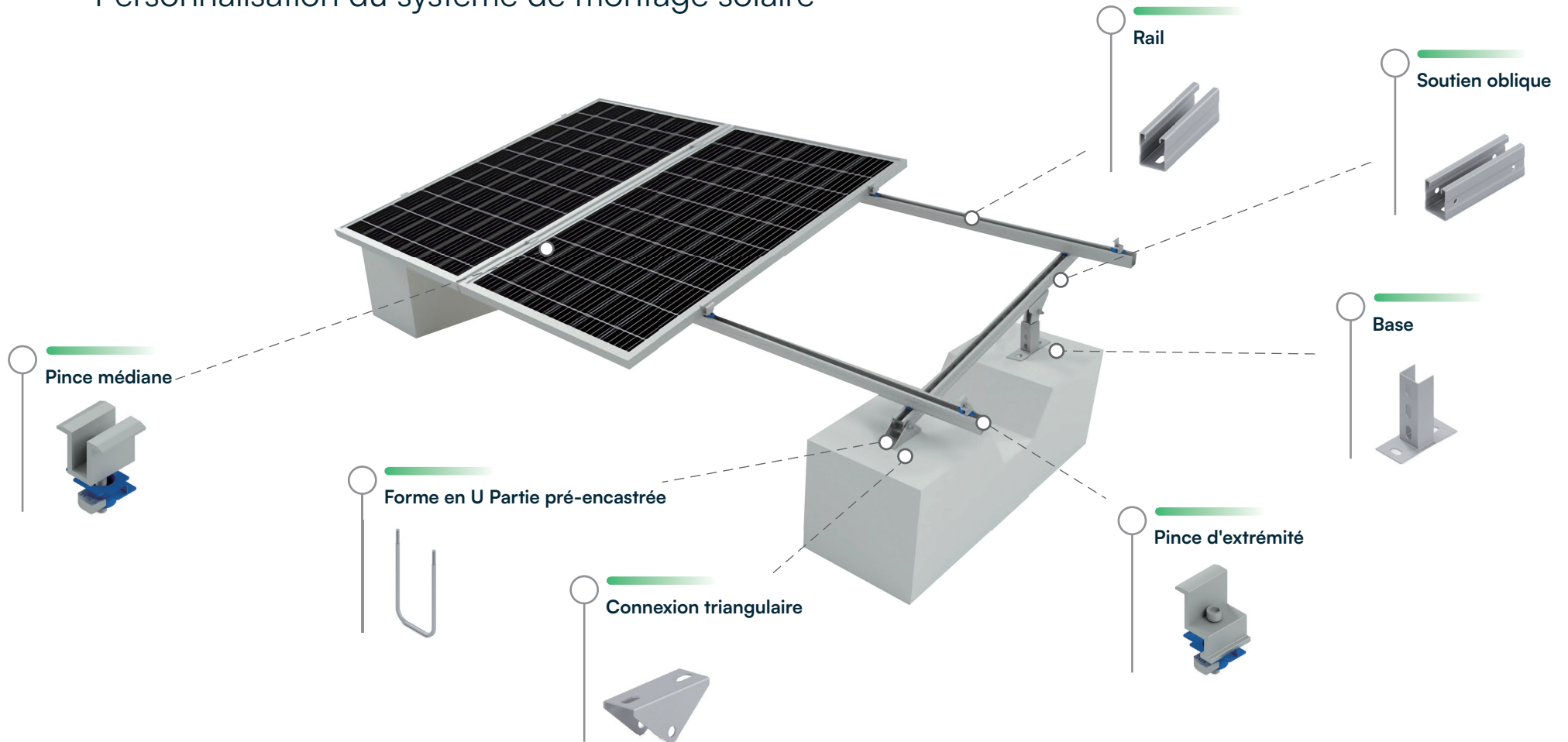
Étape 10

Terminez l'installation.



SUPPORTS EN BÉTON POUR TOITS PLATS

Personnalisation du système de montage solaire



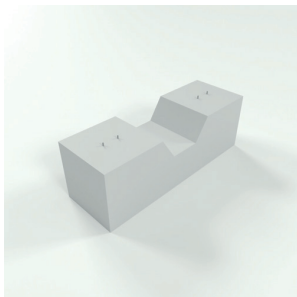
* La solution finale sera définie en fonction des conditions du projet.

SUPPORTS POUR TOITS PLATS V-TAC CONCRET

MANUEL D'INSTALLATION

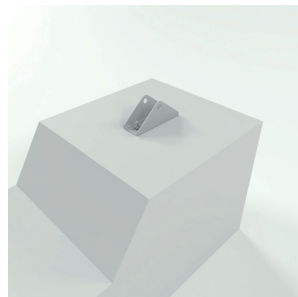
Étape 1

Pré-encastrer les pièces en U dans le bloc de béton.



Étape 2

Installer la base et le triangle.



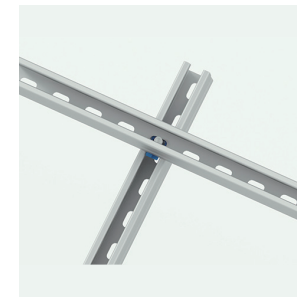
Étape 3

Installer la colonne et le support oblique sur la base.



Étape 4

Fixer les rails sur le triangle à l'aide de vis.



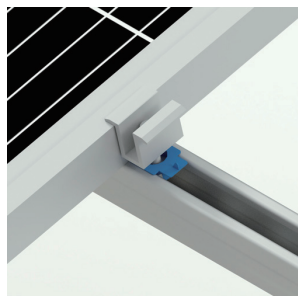
Étape 5

Connecter les rails avec connexion.



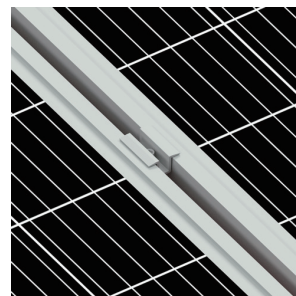
Étape 6

Fixer les panneaux solaires sur les rails à l'aide de pinces d'extrémité.



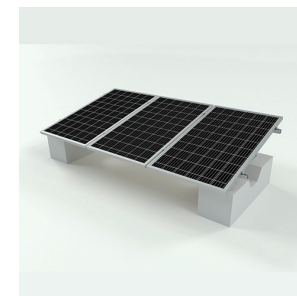
Étape 7

Fixer deux panneaux solaires à l'aide de pinces.



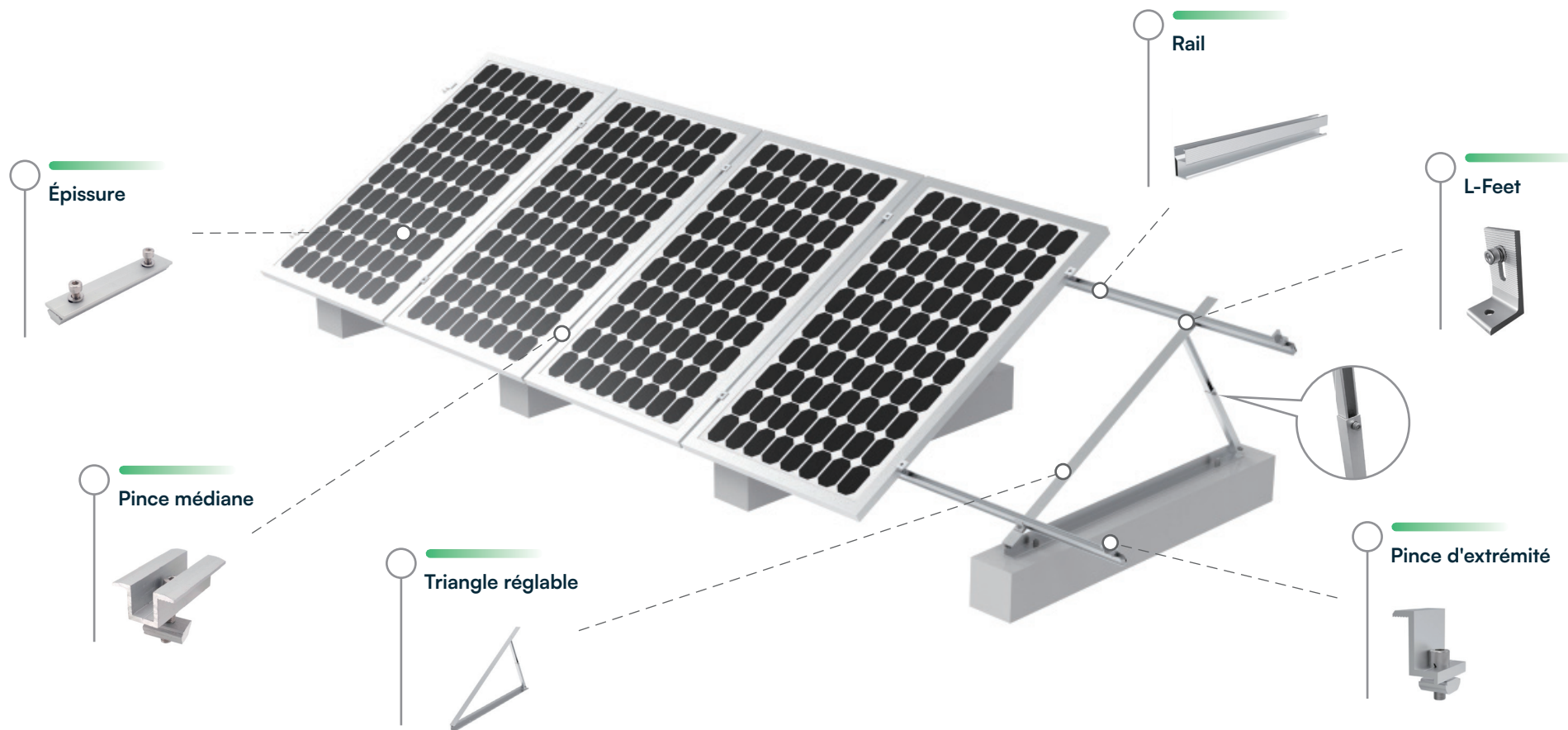
Étape 8

Terminez l'installation.



SUPPORTS TRIANGULAIRES RÉGLABLES POUR TOITS PLATS

Personnalisation du système de montage solaire



* La solution finale sera définie en fonction des conditions du projet.

SUPPORTS TRIANGULAIRES RÉGLABLES V-TAC POUR TOITS PLATS

MANUEL D'INSTALLATION



Étape 1

Déplier le triangle ajustable préassemblé, ajuster la longueur de la colonne latérale en fonction des besoins.
la longueur de la colonne latérale en fonction de l'angle d'inclinaison optimal
l'angle d'inclinaison optimal requis, puis verrouillez fermement le boulon ;



Étape 2

Installer les rails sur le triangle réglable à l'aide de la patte en L. L-Feet, verrouillez fermement le boulon et assurez-vous que tous les rails sont au même niveau.



Étape 3

Relier les rails à l'aide d'une épissure.



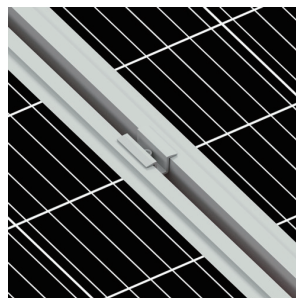
Étape 4

Fixer les panneaux solaires sur les rails à l'aide de pinces d'extrémité



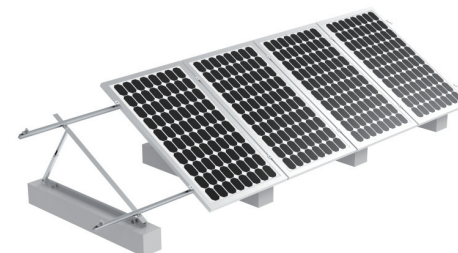
Étape 5

Fixer deux panneaux solaires à l'aide de pinces.



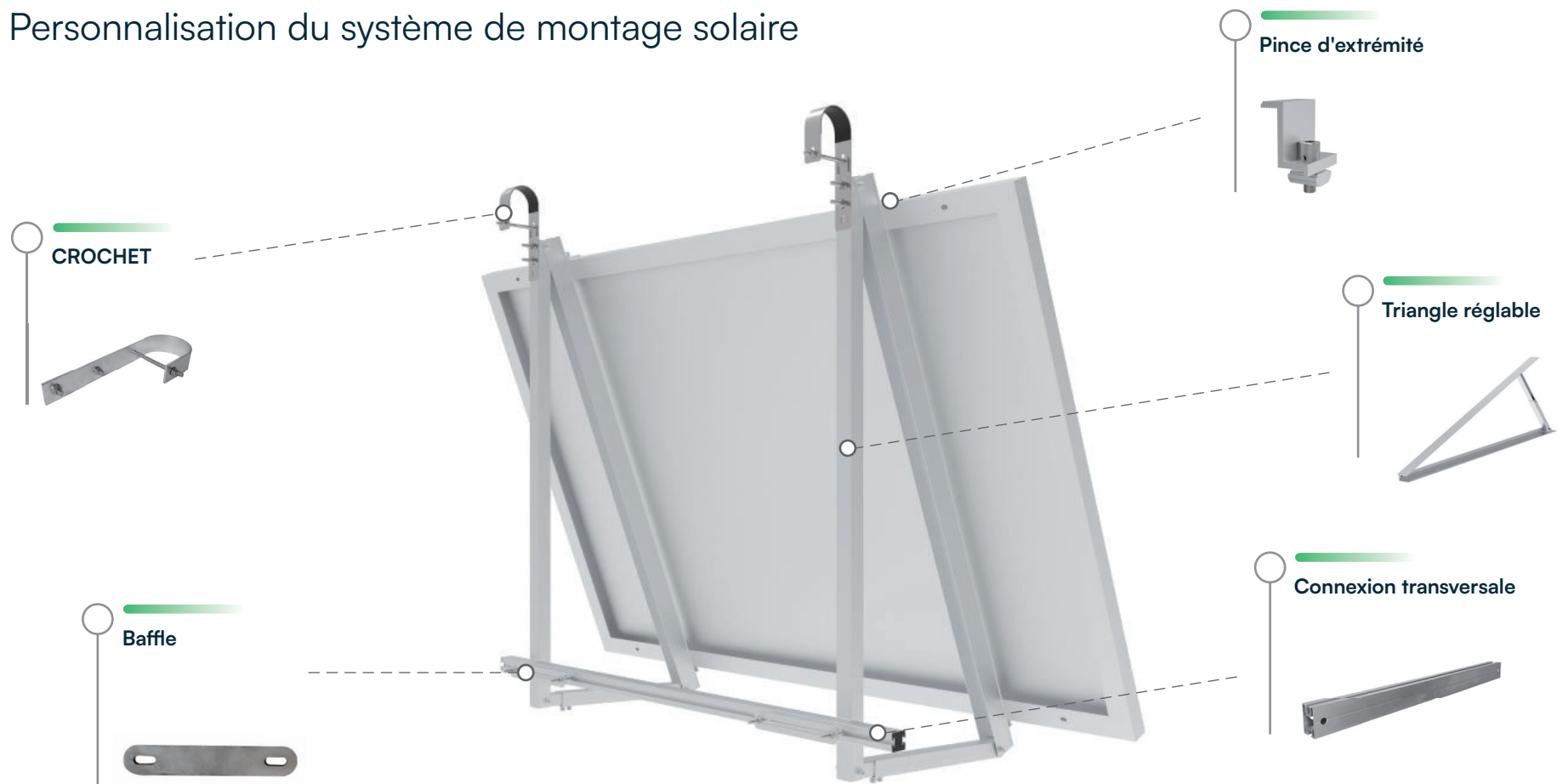
Étape 6

Terminez l'installation.



SUPPORTS DE BALCON RÉGLABLES

Personnalisation du système de montage solaire



* La solution finale sera définie en fonction des conditions du projet.

SUPPORTS DE BALCON RÉGLABLES V-TAC

MANUEL D'INSTALLATION



Étape 1

Déplier le triangle ajustable préassemblé, ajuster la longueur de la colonne latérale en fonction des besoins.
la longueur de la colonne latérale en fonction de l'angle d'inclinaison optimal
l'angle d'inclinaison optimal requis, puis verrouillez fermement le boulon ;



Étape 2

Fixer les crochets à l'aide de vis.



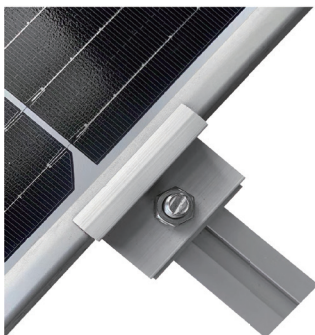
Étape 3

Relier deux triangles par une connexion transversale



Étape 4

Fixer les panneaux solaires sur les triangles à l'aide de colliers de serrage.



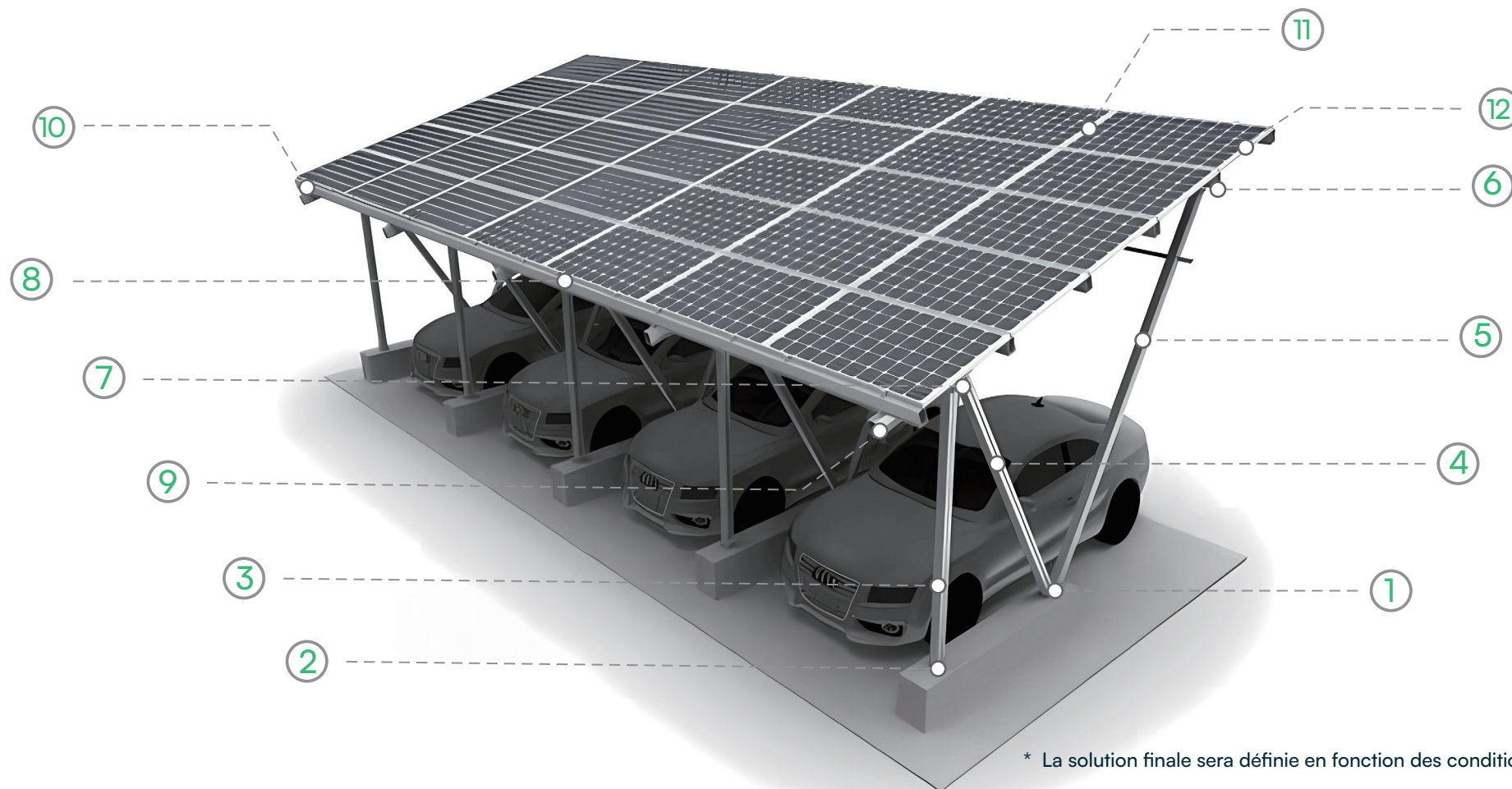
Étape 5

Terminer l'installation.



SUPPORTS SOLAIRES POUR ABRIS DE VOITURE

Personnalisation du système de montage solaire



* La solution finale sera définie en fonction des conditions du projet.

V-TAC ACCESSOIRES DE SOLAIRE SUPPORTS DE CARPORT

1

Base (300mm)



2

Base (200mm)



3

Tube Carport (2500mm)



4

Tube Carport (3760mm)



5

Tube Carport (2950mm)



6

Enveloppe H (150mm)



7

Veste H (220mm)



8

Barre transversale



9

Carport Stringer



10

Kit de serrage (35mm)



11

Pince centrale (35mm)



12

Pince d'extrémité (35mm)

